



**LEMBAR ABSTRAKSI
(CURRENT CONTENT)
TAHUN 2016**

- 1. Analisis Asuransi Pertanian di Indonesia: Konsep, Tantangan dan Prospek;** Oleh: Praptono Djunedi; Volume 12, No. 1, Tahun 2016.

Agriculture is one of the important sectors for Indonesia. However, the sector is vulnerable to various risks that may impact on the fluctuation of the income of farmers. Related to this, through Law No. 19 of 2013, the government seeks to protect farmers, one of which is through agricultural insurance. As a start-up country, the problem faced is how to develop agricultural insurance in Indonesia. Related to that, this study aims to (1) describe the concept of agricultural insurance, (2) describe the challenges faced to develop agricultural insurance, and (3) explain how the prospect. Some of the challenges can be grouped into four challenges, namely institutional, financial, technical and operational challenges. For the good prospect in the future, implementation of agricultural insurance is proposed to (1) gradually increase the allocation in state budget, (2) develop technical rules which include agricultural insurance scheme in compulsory basis, (3) encourage the relevant parties to commit in developing agricultural insurance (4) assigning to the state-owned insurance as providers and distributors of agricultural insurance as well as a role as reinsurance agency, (5) assessing the integration between the agricultural insurance scheme and agricultural services received by farmers (subsidized fertilizer, subsidized seed, and social assistance).

Keywords: farmer, risk, agricultural insurance, premium subsidy.

- 2. Kebijakan Moratorium PNS: Analisis Bezetting Pegawai, Rightsizing Kelembagaan, dan Budgeting Penyelenggaraan Pemerintahan;** Oleh: Ajib Rakhmawanto; Volume 12, No. 1, Tahun 2016.

Professional civil servant management based on merit system is needed to support government's tasks. The arrangement on number, qualification, composition, and distribution of civil servants is required to rationalize civil servants' placement in order to improve their competencies and working performances. Moratorium policy is a temporary delay of civil servant recruitment to find out the actual employee needs based on the quantity and quality aspects. The goal of this study is to analyze the strategic issues to be used as recommendations in creating civil servant moratorium policy on some aspects, such as bezetting, organization rightsizing, business process, and the government budgeting. This study is a policy research using a qualitative descriptive approach, conducted with a Focus Group Discussion (FGD) method that produces primary data and documentation study that leads to secondary data. This study shows that civil servant moratorium policy is still relevant to be extended since it is viewed in the bezetting aspect: high number of employees is hired yet they are in poor quality. Then the organizational rightsizing is not conducted in a comprehensive structure particularly at regional government in which the business process is still far from ideal. The government budgeting is not ideal between employees' salary expenditure and development expenditure in which the composition of employees' salary expenditure is higher than the development expenditure.

Keywords: moratorium, bezetting, rightsizing, budgeting.



- 3. Tantangan dan Kendala Pelaksanaan Kebijakan Pengalihan Bea Perolehan Hak Atas Tanah dan Bangunan (BPHTB) di Pemerintah Kota Gunungsitoli;** Oleh: Septiana Dwiputrianti dan Yafet K. Buulolo; Volume 12, No. 1, Tahun 2016.

The studi aims to review the impact of policy implementation on Land and Building Acquisition Tax Transfer (BPHTB) at Gunungsitoli Municipality, based on City Government Regulation Number 2 Year 2011. This study found that there are eight impediments faced by the local government of Gunungsitoli Municipality to implement the new policy of BPHTB, they are: (1) office building that is not feasible to be occupied and functioned as a work place as well as very limited space to serve taxpayers; (2) the local government has not had a proper long-term strategy to explore and enhance the revenue from the tax; (3) the organizational structure and working procedures of the department which are not adjusted with Regulation of Minister of Home Affairs Number 56 Year 2010, (4) lack of workload analysis and job analysis, (5) lack of community understanding on BPHTB and payment procedure through the self-assessment system; (6) lack of implementation of the development for employees as well as limited fund for employees training; (7) preparation and formulation of tax regional regulations that are not based on academic study or not involving taxation experts; (8) disagreement between revenue agency and land agency in Nias Regency in conducting the payment receipt verification of BPHTB.

Keywords: local taxes, policy implementation, Gunungsitoli Municipality.

- 4. Analisis Mekanisme Pengelolaan Asuransi Pertanian di Indonesia dan Potensi Dampaknya Terhadap APBN;** Oleh: Abdul Aziz; Volume 12, No. 1, Tahun 2016.

The agricultural sector is one of the sectors that make an important contribution to the Indonesian economy, therefore each farm and the farmer should have the right of protection, especially in dealing with various issues such as farm business certainty and prices, crop failures, as well as climate change. This is one of the messages that are mandated in Law No. 19 Year 2013 on the Protection and Empowerment of Farmers. Background of this problem came the idea to implement agricultural insurance in Indonesia with the aim to stabilize the income of farmers by reducing the level of losses suffered by farmers because of the risk of losing the crop. This study took some lessons from the implementation of agricultural insurance in other countries and the results of testing the implementation of agricultural insurance in Indonesia in 2013. This study uses descriptive quantitative analysis to recommend management mechanism of agricultural insurance to be applied in Indonesia and mathematically calculate the potential impact on the state budget.

Keywords: agricultural insurance, management mechanism, potential impact, state budget.

- 5. Analisis Kebijakan Pengelolaan Sampah di Kota Samarinda: Problematisasi Kebijakan dengan Pendekatan WPR;** Oleh: Andi Wahyudi; Volume 12, No. 1, Tahun 2016.

This study emphasizes on document critical analysis on waste management policy in Samarinda Municipality, namely Municipality Regulation # 2 / 2011. Drawing on Bacchi's WPR (What is the problem represented to be?) approach to policy analysis, this study reveals that management and citizen obedience are presented as two main issues in the policy to improve the quality of public and environmental health. On the management



issue, the waste management policy is not effective to tackle the problem. It is because of poor capacity in transporting the waste, while the volume of waste production is higher than the transported one. Consequently, the uncollected waste in the city prevents the local government's effort to create a clean and healthy environment. Then on the obedience issue, this policy sets sanctions for anyone who breaks the regulation. Unfortunately, this policy does not set public education as an important issue to improve citizens' behaviour. Public education should be a bottom-up approach to support the effort to create a clean and healthy city.

Keywords: *policy analysis, waste management, problematizations, WPR approach.*

6. Dampak Implementasi *Environmental Goods (EGs) List Terhadap Kinerja Perdagangan Indonesia*; Oleh: Aziza Rahmaniar Salam dan Rino Adi Nugroho; Volume 12, No. 2, Tahun 2016.

Preparation of Environmental Goods list (EGs) and its implementation plan in international trade among APEC members will have impact on trade flows to the economics of its member, including Indonesia. This analysis aims to determine the potential impact that will be faced by Indonesia's trade performance. This analysis used a Gravity model on 54 EGs products with GDP, value of imports, the distance and tariffs as variable. The analysis showed that GDP, value of imports and tariffs significantly affect Indonesian exports and imports, while distance has no significant effect either on export or import of Indonesia. Of the 48 products which can be processed, 38 products EGS will impact to increase Indonesia's imports better rather than other APEC member, which in turn will lead trade balance into deficit. 10 products, providing the possibility of increasing Indonesian exports to APEC. Overall, EGS product is manufactured products produced by developed countries, so the elimination of tariffs provide less incentive for domestic producers to increase production to meet domestic and foreign demand. Indonesia should have initiative to create and strengthen domestic industries that are environmentally friendly, facilitating investment, deregulation of the domestic private sector to build and increase productivity.

Keywords : *APEC, Environmental Goods list, Indonesia trade performance.*

7. Penataan Batas Wilayah Administrasi Desa, Hambatan dan Alternatif Solusi Dengan Pendekatan Geospasial; Oleh: Asadi; Volume 12, No. 2, Tahun 2016.

Law No. 6 of 2014 concerning Villages provides additional evidence that Indonesia has paid more attention and respect to the existence of villages. The significant amount of village expansion lately is not matched with the clarity of village boundaries that may rise in to potential conflicts. Ideally, the entire instruments to structure village boundaries must first be prepared. One of the instruments needed is the availability of large scale of basic maps (topographical maps) as the main instrument of making a village map. Unfortunately, the large-scale topographical maps are not available yet. This paper provides an alternative acceleration of village boundaries arrangement using High Resolution Satellite Imagery Data that has passed orthorectified process. By involving the community and village leaders in the process of structuring boundaries, and supported by the spirit of fraternity, all problems occurred during the activity of village boundaries can be solved with the very best solution.

Keywords: *village boundary, High Resolution Satellite Imagery Data, spirit of fraternity.*



- 8. Kebijakan Penetapan Bitung sebagai Kawasan Ekonomi Khusus (KEK);** Oleh: Radityo Pramoda dan Tenny Apriliani; Volume 12, No. 2, Tahun 2016.

The Bitung Special Economic Zone (SEZ) is a regional development policy specially devised to drive economic growth based on well-set-up infrastructures, and incentives. The role of central government in supervising the policy is very important in coping with each negative impact, both economic as well as social. The sole purpose of this qualitative research is to study the implementation of the regional development policy of Bitung as a Special Economic Zone. The analysis had been carried out with a case study approach, and then descriptively elaborated, and resulted in the finding of: (1) the previous development and infrastructure blue-print at the Bitung City level have so far been in line with the SEZ; (2) the SEZ has so far been attracting industry-based investment and creating work for the labors; (3) the formulated local regulations have been considered enough in giving legal security toward investment; (4) the establishment of Bitung as an SEZ has been considered as a sound strategic policy; and (5) the readiness of Bitung as an SEZ has been deemed adequate, despite the facts that it still needed minor adjustments in a few aspects, such as: better socialization, acceleration of land relinquishment, and increasing electricity/power.

Keywords: Policy, Bitung Determination, Special Economic Zone (SEZ).

- 9. Analisis Penentuan Suku Bunga Kredit Program Sektor Pertanian dan Potensi Pengaruhnya Terhadap APBN;** Oleh: Sidiq Suryo Nugroho, Eko Wicaksono, dan Abdul Aziz; Volume 12, No. 2, Tahun 2016.

This study is aimed to investigate the determination of interest rate subsidy provided by the government to help farmers and improve agricultural productivity. One parameter used to determine the interest rate of credit program is the Deposit Insurance Agency (LPS) interest rate. The basis for determining the interest rate credit program is one of the main issues discussed in this study. In addition, other matter discussed in this study is the proportion of interest expense borne each by the debtor and the government. The study is conducted by using mix methods analysis using primary data derived from the survey and secondary data related lending rates. Based on the analysis conducted, there are several conclusions that can be drawn. First, interest rates LPS is appropriate as the basis for determining the interest rate of credit interest rate guarantee program since LPS rate constitutes the largest portion of cost of fund. Second, in the long term the government needs to evaluate patterns of current credit program so that it can both increase the self-reliance of farmers and improve the efficiency and efectivity of government subsidy. Third, for the time being the government can implement a fixed interest rate subsidy to credit the program with regard to the ability of farmers to minimize the fiscal risks exposure in the government budget.

Keywords: Agriculture, credit program, subsidy, fiscal risk, fixed interest rate.

- 10. Efek Reformasi Birokrasi Terhadap Kemajuan Ekonomi Daerah;** Oleh: Rustan A. dan Mayahayati Kusumaningrum; Volume 12, No. 2, Tahun 2016.

Local economic activity tends to be influenced by the capabilities of the bureaucracy. If the bureaucracy is able to implement good governance principles and it has high concern on public service to create citizen welfare, so that the trend of local economic activity tends to grow highly. Furthermore, if the bureaucracy can successively encourage local



economic activity, the local development and public welfare may relatively increase. Therefore, the efforts to reform the local bureaucracy will drive local development through trickle-down effect. This study uses descriptive-quantitative approach with linear regression analysis on cross-section data from 99 local governments in 2014 which are considered as pilot projects. The result is that the bureaucratic reform contributes a positive and statistically significant impact on local economy. Two of three components of the bureaucratic reform that are assessed, namely Accountability Performance of Local Government (AKIP) and Public Services, bring statistically-significant and positive impact to the local revenue (PAD), and each point of PAD's rise tends to create a statistically-significant and positive affect on local economic growth by 1.1%.

Keywords: Bureaucratic Reform, Local Revenue, Regional Economic Growth.

11. Efektivitas Unit Reaksi Cepat Tambal Jalan di Kota Bandung; Oleh: Putri Wulandari Atur Rejeki; Volume 12, No. 3, Tahun 2016.

Bandung is one of cities that creates various innovations. One of the innovations has been done in the infrastructure sector, namely the implementation of Rapid Response Unit of Road Patch (URCTJ). URCTJ reacts to the potholes locations (street with plenty small holes) but not to the overall damaged road. The mechanism that can be done by public society to inform about the damaged road is by informing the situation directly to the Dinas Bina Marga dan Pengairan Bandung City or to the nearest urban village. Moreover, citizens can send their complaints via SMS, phone, email or twitter. The quality of repaired road is the same as the previous one (before the road was damaged). With a good road quality, the distributions of goods/services in Bandung is getting easier. Meanwhile, in case of accident rate, URCTJ has not shown much improvement due to many factors that influence it.

Keywords: effectiveness, rapid response unit, innovation.

12. MENCIPTAKAN GOOD GOVERNANCE MELALUI INOVASI PELAYANAN PUBLIK DI KOTA SURAKARTA; Oleh: Witra Apdhi Yohanitas; Volume 12, No. 3, Tahun 2016.

The optimum performance of public services is essential in order to improve the competitiveness of the region and to realize good governance. The success of the development is determined by the implementation of the appropriate and the right policies. Realizing the competitive climate as the embodiment of a conception of innovation is an integral part to the progress of a region. Therefore, the development of innovation's culture as one aspect of a bureaucratic culture that is essential for the success of bureaucratic reform. The success of Surakarta in fostering innovation is the main attraction, despite the change of leadership. Innovative programs keep continuing like surakarta public health care, child incentive cards, residence digital archive, One hour ID card service, and others. Cooperation with stakeholders and the public create an innovative program that became the flagship and pride of the city government of Surakarta. Program planning and budgetting are supporting factor in the sustainability of public service improvement programs.

Keyword: public service, innovation, Surakarta, innovative programs, good governance



- 13. Penerapan dan Pencapaian Standar Pelayanan Minimal (SPM) Bidang Pekerjaan Umum dan Penataan Ruang di Kota Samarinda Berdasarkan Peraturan Menteri Pekerjaan Umum No. 01/PRT/M/2014;** Oleh: Tri Noor Aziza; Volume 12, No. 3, Tahun 2016.

Minimum Service Standard (SPM) in public work and spatial planning sectors is a provision on the type and quality of basic services in the fields of public work and spatial planning. The service fields are obligatory mandates that must be delivered to citizens. This research aims to examine the extent of implementation of SPM and its achievement towards national target in those fields. Moreover, it will find out the pitfalls that undermine the local government agencies to fulfill the citizens' right. This research applies descriptive analysis and qualitative approach. The results are that 16 indicators from 10 kinds of basic services in the fields performed by three local government units, namely the Department of Human Settlements and Urban Planning, Department of Highways and the Department of Hygiene. However, only 5 of 16 indicators meet the national targets. This poor achievement is caused by various constraints such as: substance, technical, administration, resources, and social problems.

Keywords: *minimum service standard, indicators, achievement*

- 14. Pendekatan Ekonomi Wilayah Dalam Perencanaan Pembangunan Kota Samarinda;** Oleh: Maria Agustini Permata Sari, Mayahayati Kusumaningrum, dan Lia Rosliana; Volume 12, No. 3, Tahun 2016.

For the last ten years, mining and processing industry has become the biggest contributor in economic sectors for Samarinda after trading, restaurant and hotel. But in fact, both sectors have been decreasing due to the lack of resources. This study aims to capture the development of the sub-districts based on their local potential and development by using qualitative method. The focus of this study is to identify the local potential based on economic sectors (agriculture, processing industry; trading and restaurant; and transportation and communication). In collecting the data, this study makes use the secondary data that are collected from various literatures. The results are that the mapping of the development of the districts in Samarinda based on its economic potential can be grouped or defined into three economic clusters: Leading Cluster, Potential Cluster and Opportunity Cluster.

Keywords: *regional economic, development planning.*

- 15. Evaluasi Kebijakan Pencalonan Anggota DPRD dalam Penyelenggaraan Pemilu Tahun 2014;** Oleh: Tatang Sudrajat; Volume 12, No. 3, Tahun 2016.

The nomination policy of local parliament members in general election is regulated in various policies by the Central Parliament, the President and the Election Commission. In order to improve the election quality, policy evaluation is required. This study uses legal research/normative methods and library/documentary study of the policies content. It is found out that there are some different aspects in managing the nomination of local parliament members in Law No. 8 of 2012 and some Election Commission/KPU's regulations. Substantively, there are several provisions that are ambiguous, multi-interpretative, contradictory, and are not implementable. This problem causes local election commissions cannot optimally perform their tasks. Therefore, it is recommended to have policy revision in several aspects, such as education qualification, physical and



spiritual health, authorized health agency, political liaison officers, resignation certificate or decree from certain positions at public agencies (such as civil servant, military, police, etc.) and other institutions to avoid conflict of interest, nomination forms, and several errors/inconsistencies terms.

Keywords: *policy evaluation, local parliament nomination, general election.*



INDEKS NASKAH TAHUN 2016 BERDASARKAN ABJAD

1. Analisis Asuransi Pertanian di Indonesia: Konsep, Tantangan dan Prospek; Oleh: Praptono Djunedi; Volume 12, No. 1, Tahun 2016.
2. Analisis Kebijakan Pengelolaan Sampah di Kota Samarinda: Problematisasi Kebijakan dengan Pendekatan WPR; Oleh: Andi Wahyudi; Volume 12, No. 1, Tahun 2016.
3. Analisis Mekanisme Pengelolaan Asuransi Pertanian di Indonesia dan Potensi Dampaknya Terhadap APBN; Oleh: Abdul Aziz; Volume 12, No. 1, Tahun 2016.
4. Analisis Penentuan Suku Bunga Kredit Program Sektor Pertanian dan Potensi Pengaruhnya Terhadap APBN; Oleh: Sidiq Suryo Nugroho, Eko Wicaksono, dan Abdul Aziz; Volume 12, No. 2, Tahun 2016.
5. Dampak Implementasi *Environmental Goods (EGs) List* Terhadap Kinerja Perdagangan Indonesia; Oleh: Aziza Rahmaniar Salam dan Rino Adi Nugroho; Volume 12, No. 2, Tahun 2016.
6. Efek Reformasi Birokrasi Terhadap Kemajuan Ekonomi Daerah; Oleh: Rustan A. dan Mayahayati Kusumaningrum; Volume 12, No. 2, Tahun 2016.
7. Efektivitas Unit Reaksi Cepat Tambal Jalan di Kota Bandung; Oleh: Putri Wulandari Atur Rejeki; Volume 12, No. 3, Tahun 2016.
8. Evaluasi Kebijakan Pencalonan Anggota DPRD dalam Penyelenggaraan Pemilu Tahun 2014; Oleh: Tatang Sudrajat; Volume 12, No. 3, Tahun 2016.
9. Kebijakan Moratorium PNS: Analisis *Bezetting* Pegawai, *Rightsizing* Kelembagaan, dan *Budgeting* Penyelenggaraan Pemerintahan; Oleh: Ajib Rakhmawanto; Volume 12, No. 1, Tahun 2016.
10. Kebijakan Penetapan Bitung sebagai Kawasan Ekonomi Khusus (KEK); Oleh: Radityo Pramoda dan Tenny Apriliani; Volume 12, No. 2, Tahun 2016.
11. Menciptakan *Good Governance* Melalui Inovasi Pelayanan Publik di Kota Surakarta; Oleh: Witra Apdhi Yohanitas; Volume 12, No. 3, Tahun 2016.
12. Penataan Batas Wilayah Administrasi Desa, Hambatan dan Alternatif Solusi Dengan Pendekatan Geospasial; Oleh: Asadi; Volume 12, No. 2, Tahun 2016.
13. Pendekatan Ekonomi Wilayah Dalam Perencanaan Pembangunan Kota Samarinda; Oleh: Maria Agustini Permata Sari, Mayahayati Kusumaningrum, dan Lia Rosliana; Volume 12, No. 3, Tahun 2016.
14. Penerapan dan Pencapaian Standar Pelayanan Minimal (SPM) Bidang Pekerjaan Umum dan Penataan Ruang di Kota Samarinda Berdasarkan Peraturan Menteri Pekerjaan Umum No. 01/PRT/M/2014; Oleh: Tri Noor Aziza; Volume 12, No. 3, Tahun 2016.
15. Tantangan dan Kendala Pelaksanaan Kebijakan Pengalihan Bea Perolehan Hak Atas Tanah dan Bangunan (BPHTB) di Pemerintah Kota Gunungsitoli; Oleh: Septiana Dwiputrianti dan Yafet K. Buulolo; Volume 12, No. 1, Tahun 2016.



UCAPAN TERIMA KASIH

Jurnal Borneo Administrator mengucapkan terima kasih dan penghargaan yang setinggi-tingginya kepada para Mitra Bestari (reviewers) yang telah melakukan review terhadap naskah-naskah yang masuk ke Jurnal Borneo Administrator selama 2016.

Dr. Asropi, M.Si. (Lembaga Administrasi Negara, Jakarta)

Dr. Bevaola Kusumasari (Universitas Gadjah Mada, Yogyakarta)

Dr. Ir. Solimun, MS. (Universitas Brawijaya, Malang)

Dr.rer.publ. Samodra Wibawa, M.Sc. (Universitas Gadjah Mada, Yogyakarta)

Dr. Riant Nugroho (Universitas Pertahanan)

Elly Susanto, Ph.D. (Universitas Gadjah Mada, Yogyakarta)

Prof. Dr. Djoko Setyadi, M.Sc. (Universitas Mulawarman, Samarinda)

Prof. Dr. Hj. Nur Fitriyah, MS. (Universitas Mulawarman, Samarinda)

Prof. Dr. Hj. Eny Rochaida, M.Si. (Universitas Mulawarman, Samarinda)

Prof. Dr. Monang Sitorus, M.Si. (Universitas HKBP Nommensen, Medan)

Prof. Sarosa H., S.H., M.Hum. (Universitas Mulawarman, Samarinda)

Rusdi Muchtar, M.A., APU. (Universitas Darma Agung, Medan)

Wawan Sobari, M.A., Ph.D. (Universitas Brawijaya, Malang)



PETUNJUK PENULISAN

Naskah merupakan hasil penelitian, kajian, maupun pemikiran kritis terhadap isu-isu di bidang administrasi publik/negara, misalnya kebijakan publik atau manajemen publik, yang orisinal dan belum pernah diterbitkan di jurnal atau majalah lain. Naskah diketik dalam Bahasa Indonesia (untuk Judul, Abstrak dan Kata Kunci diketik dalam Bahasa Inggris dan Bahasa Indonesia), menggunakan kertas ukuran A4 sepanjang 15-20 halaman (termasuk gambar, tabel dan daftar pustaka). Menggunakan huruf *Times New Roman* ukuran 12 (kecuali judul, nama dan alamat penulis) dan spasi tunggal. Batas tepi kanan 2,5 cm, batas tepi kiri 3 cm, batas atas 3 cm, dan batas bawah 3 cm. Format naskah sekurang-kurangnya adalah sebagai berikut:

**JUDUL NASKAH DITULIS DALAM DWIBAHASA
(Bahasa Indonesia dan Bahasa Inggris), huruf Arial 14 pt**

*THE TITLE IS PRESENTED IN TWO LANGUAGES
(Indonesian and English), Arial 14pt and Italic*

Nama Penulis
(Arial 12, bold)

Afiliasi atau nama lembaga tempat penulis bekerja

Alamat lembaga tempat penulis bekerja

Alamat email penulis

(Arial 12)

Abstract

Abstract is a brief description of the article, between 100 and 200 words, to help readers quickly reveal purpose and content of the article. It includes aim of the article, method, and conclusion. It is presented in two languages, typed in Times New Roman 11pt, single line spacing, and 1 cm indentation.

Keywords: first keyword, second keyword

Abstrak

Abstrak adalah penjelasan singkat artikel, antara 100 dan 200 kata, untuk membantu pembaca mengetahui tujuan dan isi naskah. Isi abstrak mencakup tujuan penulisan naskah, metode, dan kesimpulan. Abstrak ditulis dalam dua bahasa, menggunakan huruf Times New Roman 11pt, spasi tunggal, dan indentasi 1 cm.

Kata kunci: kata kunci pertama, kata kunci kedua



A. PENDAHULUAN

Pendahuluan merupakan pembukaan naskah, memuat aspek-aspek atau hal-hal yang membuat tema tulisan tersebut menarik dan mengundang rasa keingintahuan (*curiosity*). Penulis dapat mengemukakan fenomena-fenomena menarik terkait dengan topik tulisan dengan disertai data-data pendukung. Dan pada akhir bagian ini perlu diberikan tujuan penulisan tema atau permasalahan yang akan dijawab. (*Times New Roman* 12pt, spasi 1).

B. METODE PENELITIAN

Apabila naskah tersebut merupakan hasil penelitian maka perlu dituliskan metode penelitian yang digunakan, setidaknya meliputi pendekatan yang digunakan, cara pengumpulan data, dan cara analisis data. (*Times New Roman* 12pt, spasi 1).

C. KERANGKA TEORI ATAU KERANGKA KONSEP

Bagian ini memaparkan teori, pendekatan atau konsep yang digunakan sebagai dasar berpikir untuk membahas tema naskah. (*Times New Roman* 12pt, spasi 1).

D. HASIL DAN PEMBAHASAN

Bagian ini berisi temuan-temuan, analisis dan pembahasan serta interpretasi terhadap data yang digunakan secara lengkap dan komprehensif serta terkait dengan permasalahan. (*Times New Roman* 12pt, spasi 1).

Referensi

Setiap pendapat, ide, data, atau informasi yang dikutip dari sumber lain baik dalam bentuk kalimat langsung maupun tidak langsung, harus dicantumkan sumbernya dengan menggunakan *running note*, dan ditulis dalam Daftar Pustaka. Catatan kaki (*footnote*) bisa digunakan untuk memberikan penjelasan atau informasi tambahan terhadap bagian isi naskah.

Tabel dan Gambar

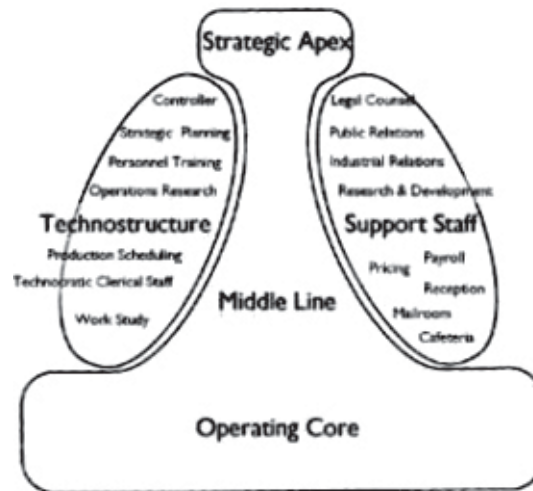
Setiap tabel dan gambar diberi judul. Posisi judul tabel berada di atas tabel, sedangkan posisi judul gambar berada di bawah gambar. Jika tabel dan gambar merupakan hasil kutipan atau modifikasi dari sumber lain maka wajib mencantumkan sumbernya. Contoh penampilan tabel dan gambar adalah sebagai berikut:



Tabel 1.
Jumlah Penduduk Menurut Kabupaten/Kota di Kalimantan Timur tahun 2012-2014

No.	Kabupaten/Kota	2012	2013	2014
1	Paser	244.111	249.991	256.175
2	Kutai Barat	143.101	144.018	144.892
3	Kutai Kartanegara	665.489	683.131	700.439
4	Kutai Timur	281.594	294.216	306.974
5	Berau	191.576	197.388	203.223
6	Penajam Paser Utara	148.034	150.205	152.119
7	Mahakam Ulu	25.522	25.678	25.894
8	Balikpapan	583.272	594.322	605.096
9	Samarinda	764.908	781.015	797.006
10	Bontang	152.089	155.880	159.614
Jumlah Total		3.199.696	3.275.844	3.351.432

Sumber: BPS Kaltim (2015:79)



Sumber: Mintzberg (1993)

Gambar 1.
Pembagian Kelompok pada Struktur Organisasi

E. PENUTUP

Penutup berisi **Kesimpulan** dan **Saran** atau **Rekomendasi** berkaitan dengan tujuan tulisan atau permasalahan yang dikemukakan pada bagian Pendahuluan. Apabila dianggap perlu bisa ditambahkan implikasi kebijakan atas saran atau rekomendasi yang diberikan. (*Times New Roman* 12pt, spasi 1).

F. UCAPAN TERIMA KASIH (*Optional*)

Bagian ini bisa digunakan untuk memberikan pengakuan mengenai status naskah dan apresiasi kepada sponsor penelitian maupun pihak yang telah turut membantu penulis dalam melakukan penelitian maupun pembuatan naskah. (*Times New Roman* 12pt, spasi 1).



DAFTAR PUSTAKA

Daftar Pustaka ditulis menggunakan model APA, disusun berurutan berdasar abjad. Untuk sumber yang diperoleh dari internet harus disertakan tanggal sumber tersebut diakses/diunduh. (*Times New Roman* 12pt, spasi 1).

Beberapa contoh penulisan daftar pustaka adalah sebagai berikut:

Dwiyanto, Agus. (2015). *Reformasi Birokrasi Kontekstual*. Yogyakarta: Gadjah Mada University Press.

PKP2A III LAN. (2010). Efektivitas Perencanaan Pembangunan Daerah di Kalimantan. *Jurnal Borneo Administrator*. 6 (1). hal. 1876-1898.

Utomo, Tri Widodo W. (2009). *Balancing Decentralization and Deconcentration: Emerging Need for Asymmetric Decentralization in the Unitary States*. Makalah Diskusi No. 174. Nagoya: Graduate School of International Development (GSID), Nagoya University. Online: <http://www.gsid.nagoya-u.ac.jp/bpub/research/public/paper/article/174.pdf> diakses tanggal 25 November 2010.

Pengiriman Naskah

Naskah dikirim secara online melalui <http://www.samarinda.lan.go.id/jba/> (disediakan template untuk penulisan naskah) dilengkapi dengan Pernyataan Keaslian Naskah dan CV penulis. Setiap naskah yang masuk ke Redaksi akan dievaluasi oleh Tim Penyunting, kemudian direview oleh Mitra Bebestari (*Reviewers*) yang memiliki kepakaran di bidang yang sesuai dengan tema naskah. Penyunting berhak mengubah susunan kalimat, panjang tulisan dan aspek penulisan lainnya agar sesuai dengan gaya selingkung *Jurnal Borneo Administrator*. Atas setiap naskah yang dimuat akan diberikan jurnal dan cetak lepas (*off-print*) secara gratis, serta imbalan kepada penulis.