

Lembar Abstraksi (Current Content) Tahun 2017

1. Membangun Model Pelayanan Publik Desa : Mendekatkan Pelayanan Di Tingkat Lokal; Marsono; Vol 13 No 1, Tahun 2017.

Construction of village's public service model is imperative since village has more authorities as has been mandated by Law Number 6 of 2014 concerning the village. The authorities allow village government to prepare RPJMDes, APBDes, and village planning independently. Therefore, village has wider opportunities to improve its services in accordance with its nature and characteristics. In rural public service perspective, it is necessary to develop a public service model. This study concludes several things: (1) Classification, types and numbers of village services are different; (2) The village's services are mostly in the form of recommendations at first level which then should be completed at higher levels at sub district and district agencies; (3) To improve the quality of village's services, they are classified into three groups, namely: (a) recommendation letter; (b) citizenship services; and (c) rural community empowerment. Furthermore, the recommended model is a dispersed model because village service is a part of public service system at sub district and district levels. However, only a small part of the public services are fully completed at village government, such as administrative service.

Keywords: Capacity building, public services, the village government

2. Evaluasi Dampak Pelaksanaan Program Pembinaan Dan Pengembangan Industri Kecil Dan Menengah Di Kabupaten Ponorogo; Dina Trisiana Iskandar, Sumartono dan Tjahjanulin Domai; Vol 13 No 1, Tahun 2017

This research is part of thesis that aims to evaluate the impact of the implementation program of development of small and medium industries in Ponorogo Regency, such as the impact of increasing the skills and improving the welfare of SMEs. The method used is descriptive qualitative evaluation. The evaluation results show that the program's goals include increased skills not optimum. It is evident from the interviews that output of this program to increase the knowledge of SMES. But, because this knowledge is only basic level, where after joining the training, SMEs will find new information and knowledge, so the technical and management skills of SME entrepreneurs not increase properly. However, it should be noted that through the impact evaluation there is improvement of SME's skills in the product quality. On the other hand, through impact evaluation the welfare improvement is not maximal yet in order to upgrade sales turnover. From the result of this evaluation, the lack of monitoring and evaluation causing the program has not been successful in achieving target. The monitoring and evaluation process are needed to analyze the problems and make some alternative solutions, so the regional development planning can be effective and efficient.

Keywords: Impact evaluation, SME development, welfare

3. **Kualitas Pelayanan Izin Mendirikan Bangunan (IMB) Pada Badan Pelayanan Perizinan Terpadu Dan Penanaman Modal (BPPTPM) Kabupaten Cianjur Provinsi Jawa Barat;** Nanang Suparman; Vol 13 No 1, Tahun 2017.

Public should receive an easy, fast, accurate, and secured services in getting any licenses they need. In order to that, the purposes of this research are to understand how the issue of building permit process is done, reveal the meaning of the whole phenomenon according to the public and the Government, and to know the obstacles or problems faced by BPPTPM Cianjur in West Java as the unit in charge of licensing areas. This research applied descriptive study with qualitative approach. From the results of the analysis, it could be concluded that the quality of licensing which is measured through four (4) dimensions: easiness, speed of service, accuracy, and security had not been going well yet. It happened because of some factors such as: unsolid organizational structure, imbalances of human resources in both quantitative as well as qualitative, inadequate and out of date infrastructure and technology, and complicated procedure.

Keywords : BPPTPM, IMB, Quality of Service

4. **Pengaruh Kepemimpinan, Budaya Organisasi, Dan Lingkungan Kerja Serta Kepuasan Kerja Terhadap Kinerja Pegawai Wilayah Kecamatan Kota Tarakan;** Ana Sriekaningsih; Vol 13 No 1, Tahun 2017.

The purpose of this study is to determine the significance of the influence of the leadership, organizational culture and work environment to employee performance and job satisfaction as an intervening variable. The research population is all employees in the District of the City of Tarakan, with a sample of 128 employees. Data analysis method used in this research is path analysis. The research findings show that leadership, organizational culture and work environment had positive and significant impact on employee performance. The second discovery revealed that the leadership, work environment and job satisfaction held significant positive effect on employee performance, whereas the organizational culture had significant negative effect on employee performance. Results of path analysis showed that: (1) Job satisfaction is proven as an intervening variable between leadership a direct influence on employee performance is more dominant than the indirect effect. (2) Job satisfaction is proven as an intervening variable indirect influence of organizational culture on employee performance is more dominant than the direct effect. (3) Job satisfaction is proven as an intervening variable indirect influence among the working environment is more dominant than the direct effect.

Keywords: Leadership, organizational culture, working environment, job satisfaction, employee performance

5. **Sebuah Pelajaran Dari Pelaksanaan Reformasi Pajak Di Indonesia Dan Vietnam;** Abdul Rahman; Vol 13 No 1, Tahun 2017.

1997 Asian crisis brought ASEAN countries in condition where banking system damaged, GDP dropped and the exchange rate plunged. Taxation became 'rescuer' to overcome financial deficit and stable economy. Improvements in taxation are realized by tax reforms. In ASEAN, tax reforms have been undertaken since 1980s and they have significant contribution to increase tax revenue and to improve tax ratio. Specifically, we highlight Vietnam as the highest ratio and Indonesia as the lowest ratio. This paper explores the elements of innovation in tax reforms between Indonesia and Vietnam in order to seek

the key of success factor of Vietnam in tax ratio. Our study found several interesting points. Firstly, tax reforms in Indonesia and Vietnam have similarity approaches, namely focusing on the policy and administration reforms. Secondly, for both countries, tax reforms have contributed in increasing tax revenue. Thirdly both countries highlight the role of tax reforms in enlarging the function of government in allocating state budget for social expenditure. Finally, we underscore the appreciation of government for society as taxpayers in the form of large allocation for public interests as a key success factor in increasing tax ratio in Vietnam.

Keywords: *Tax reforms, phase of reforms, lesson of reform, tax revenue, tax ratio*

6. Penetapan Sertifikasi Aquaculture Stewardship Council (ASC) Terhadap Produk Udang Budidaya; Radityo Pramoda dan Hertria Maharani Putri; Vol 13 No 2, Tahun 2017

ASC (Aquaculture Stewardship Council) is a label, indicating that a product that has been passed through environmental sustainability and good aquaculture practices. Objectives of this study are to identify ASC standards and national regulations, and to examine the readiness of exporters and shrimp farmers to apply ASC principles in Tarakan. This study utilizes empirical juridical and descriptive statistical methods. Results of the study indicate that: (1) ASC certification has 7 principles, 34 criteria, and 103 indicators; (2) ASC principles are supported by: 5 Laws, 4 Government Regulations, 1 Presidential Decree, 3 Regulations of the Minister of Marine Affairs and Fisheries, and 4 Decrees of the Minister of Marine Affairs and Fisheries; (3) ASC certification requires high cost; (4) in general the level of readiness of exporter and shrimp fishermen still need to be improved; (5) pond land is mostly illegal. The policy recommendations of this research are: (1) the government reorganizes the national regulatory system to avoid overlapping rules and regulatory vacancies; (2) the government provides lobbies and assessors to relieve the cost of certification; (3) the government adopts the ASC principle criteria to improve competitiveness; (4) the government encourages municipal government in Tarakan to immediately resolve the problem of illegal fishing ponds.

Keywords: *Application, Cultivation Stewardship Council, Aquaculture Shrimp Products*

7. Pengaruh Kekayaan Sumber Daya Alam Batubara Terhadap Ketimpangan Pendapatan Di Provinsi Kalimantan Timur; Ahmad Zaini; Vol 13 No 2, Tahun 2017.

East Kalimantan Province is the largest producer of natural resources in Indonesia. Due to the massive exploitation process and high value, the mining sector has the biggest contribution and thus dominates the economy sector in the region. Related to this conditions, this study aims to describe the effect the effect of coal as natural resource on income inequality in East Kalimantan Province. This study uses panel data from nine districts/municipalities in East Kalimantan during 2006 until 2014, which is then processed by a pooled least square model. The study concludes that the contribution of coal sub-sectors in the economy is positively related to income inequality. The higher the contribution of coal subsector in the economy, the higher the income inequality in East Kalimantan Province. In addition, this study also finds that local government expenditure is not significantly related to income inequality, which means that the local government has not succeeded in creating equal prosperity in that region. However, the economic growth and the contribution of agricultural sector have no significant effect on income inequality.

Keywords: *income inequality, natural resources curse, government expenditure.*

8. Pengembangan Kompetensi Aparatur Sipil Negara Di Lingkungan Pemerintah Provinsi Kalimantan Timur; Dewi Sartika dan Mayahayati Kusumaningrum; Vol 13 No 2, Tahun 2017.

This study aims to describe the competence development of civil servants in East Kalimantan Provincial Government based on Law Number 5 Year 2014 and the factors that influence it. With qualitative descriptive method, secondary data is collected through library research. Result of the research is the comparison of the personnel posture, senior officer ratio based on gender, and the accomodation of the local people which is still relatively small; Competence development is still considered to be the domain of BKD and has not become a priority of regional government needs based on regional content. Competency development is still constrained by the lack of budget and managerial staff, the existence of inconsistent central policies that can not be followed by the region. Assessment is recommended toward the competencies which is relevant and required for senior leader level in order to arrange developed standards of managerial and socio-cultural competence. Competence development is not only concerned with the priority of accomodating local people to be apparatus, but also the vision of regional development. Capacity building should be based on the agency's key strategic objectives and performance indicators. Dynamic leadership regeneration is needed as well as competency mapping with respect to gender sensitivity and priority of local people / regional content. Thus, innovative laboratories are required in each region to make change project of every high-level leader sustainable.

Keywords: Competence Development, Civil Servant, East Kalimantan Province Government.

9. Analisis Besaran Tambahan Penghasilan Bagi Aparatur Pemerintah Daerah Dengan Metode Indeks Insentif; Rustan A, Fani Heru Wismono, Kemal Hidayah dan Wildan Lutfi A; Vol 13 No 2, Tahun 2017.

This paper descriptively presents a concept of supplementary income calculation for civil servants simulated using Job Incentive Index method. It seriously takes into account the amount of local budget (APBD) allocated for additional income of civil servants (TPP), Number of Regional Civil Servants, and aligned with various related regulations. Using mix-method approach obtained the amount of TPP for each level of job proportionally and based on work performance. This paper also includes key considerations that need to put a concern before the TPP policy is formulated. Consequently, the implementation of TPP can bring "good news" to civil servants themselves and the local government performance as a whole. Furthermore, it is expected not to burden any local budget allocation in other sectors.

Keywords: Job Incentive Index, Additional Income

10. Analisis Rentang Harga Gula Kristal Rafinasi Pada Pasar Lelang Komoditas Dengan Pendekatan Harga Paritas; Bagus Wicaksana; Vol 13 No 2, Tahun 2017

The government has stipulated Trade Minister Regulation Number 16/M-DAG/PER/3/2017 regarding Refined Sugar Trade in Commodity Auction Market. However, the method of determining the highest and the lowest sugar price has not been arranged in the regulation. Thus, this study aims to analyze the price range of Refined Sugar in Commodity Auction Market. Import parity approach of raw sugar is utilized to calculate auction price range. The cost components are highest and lowest raw sugar price in international

market as well as tolling fee for production and distribution of refined sugar. The result indicates that the estimated lowest price is between IDR 7,869/Kg and IDR 8,176/Kg and the estimated highest price is between IDR 11,527/Kg and IDR 11,742/Kg. This study recommends that import parity approach of raw sugar can be used to determine the price range of refined sugar. However, technical guidance for seller/buyer with existing sales contracts, technical team consisting representative of stakeholders to anticipate the fluctuating price issue, and the certainty of import quota for raw sugar as supply guarantee of refined sugar in action market are needed to be considered in order to support the regulation.

Keywords: Refined Sugar, Auction Market, Parity Price

11. Public Sosial Private Partneship (PSPP) Dalam Penyediaan Infrastruktur Publik; Tomi Setiawan dan Nosia Warsa; Vol 13 No 3, Tahun 2017.

Purpose of this research is to explain phenomenon of public infrastructure provision through Public Social Private Partnership (PSPP) mechanism. PSPP basically offers an opportunity for community organizations to act between the government and the private sector in the provision of public services. Sumedang is a regency that has started the mechanism to build and develop market infrastructure through PSPP mechanism. It is intended to allow the market development activities quickly and to get legitimation from all parties. This research uses qualitative method. Data are collected through in-depth interviews and secondary literature. This research is important to gain theoretical support as well as practice at the level of the actors. Result of the research indicates that PSPP offers multi-actor involvement in the process of providing public infrastructure, however this engagement results a more difficult proces in fulfilling their interests.

Keywords: public social private partnership, public infrastucture.

12. Mengukur Kemampuan Keuangan Daerah Pemerintah Kota Semarang Dalam Pelaksanaan Otonomi Daerah Tahun 2013-2017; Budi Prayitno; Vol 13 No 3, Tahun 2017.

For the last five years, Semarang City has shown significant improvements in its public services, urban planning, and regional development. Local government leaders and most importantly financial performance of Semarang City Local Government are some of the key factors behind its success. This research is aimed to identify fiscal decentralization level of Semarang City Local Government within 2013-2017 by analyzing financial capacity of Semarang City, level of fiscal decentralization, ratio balance between operational and capital expenditure, as well as contribution of Regional Revenue (PAD) towards its Regional Budget (APBD). The research indicates that Semarang City's Fiscal Sovereign Rating Position is at Participatory Level. Semarang City Local Government is considered nearly capable in performing regional autonomy matters. Moreover, Fiscal Decentralization Ratio Level shows that the financial capacity of Semarang City is at moderate level with average proportion of 36,53%. Ratio between Daily Expenditure and PAD (Regional Revenue) shows financial capacity of Semarang City is at excellent position. In average, the proportion between daily and development expenditure is 41.27% and 58.73%. Additionally, PAD contribution towards Regional Budget (APBD) gradually increases each year. In general, financial performance of Semarang City Local Government improves every year.

Keywords: regional autonomy, fiscal decentralization, local revenue, financial performance

13. Studi Mengenai Transformasi Ekonomi Berbasis Pariwisata Di Provinsi Kalimantan Selatan; Fitri Handayani; Vol 13 No 3, Tahun 2017.

According to the unstable economy if the economy is depend on the mining sector, it is necessary for the government of South Kalimantan Province considering to encourage the economic activities of other sectors. Tourism is one sector that can be considered. The purpose of this paper is to know the impact of the tourism sector on other sectors in South Kalimantan and to find out the province's readiness to make tourism as a leading sector. The research method used is the analysis of Input-Output table. Based on the results of the analysis, the tourism sector has a spread of power index of 0.937 which means its influence on all sectors of the economy closely but not too strong. Meanwhile, the sensitivity index is 1.443 (above average for all sectors). Based on spread of power and sensitivity index, the tourism sector is quite ready to become a key or leading sector in South Kalimantan. From the result of output and income impact analysis, tourism sector which become priority is transportation, trade, and restaurant sub sector.

Keywords: *tourism, Input-Output analysis, economy impact.*

14. Tingkat Kesesuaian Kompetensi Inti Dan Manajerial Pejabat Pengawas (Eselon Iv) Di Kantor Wilayah Kementerian Agama Provinsi Kalimantan Timur; Lia Rosliana dan Rustan A; Vol 13 No 3, Tahun 2017.

Competency is one of the driving elements that will elevate the organizational performance. The suitability between competencies required by the job and those possessed by the person performing that position will influence the level of organizational achievement and the effectiveness of task demands (Marrelli, 1998, Jackson and Schuler. 2003). Discussing competency is an interesting topic since it is concerning "the ability to do something and to manage it" (Bradley, 1991). The inability to fulfill a competency standard will undermine the performance of the job and organization. This research utilizes mixed method approach by conducting competency diagnosis toward supervisor officers (echelon IV) in the Regional Office of the Ministry of Religious Affairs of East Kalimantan Province in order to map the gap analysis of the skill in every position. Results of the study indicates that most of supervisor officers have met the expected competency standard. However, there are some officials that did not fit the competency standard. In order to improve the officers' competency (or minimize the competency gap), this study offers eight efforts that can be performed such as providing training which is relevant with the competency required, independent training, coaching, job-shadowing, giving challenge, organizational culture change, continous performance feedback, as well as assignment and apprenticeship.

Keywords: *Competency, Suitability of Competency, Competency Improvement*

15. Upaya Penguatan Badan Penelitian Dan Pengembangan Kota Samarinda Pasca Penerapan Peraturan Pemerintah Nomor 38 Tahun 2017 Tentang Inovasi Daerah; Tri Wahyuni dan Tri Noor Aziza; Vol 13 No 3, Tahun 2017.

Innovation can create better bureaucracy. Article 386 paragraph 1 Law Number 23 Year 2014 concerning Local Government states that in order to improve local government performance, the local governments can create innovations. The successful innovation in Samarinda Municipality in 2016 is a great capital to continue the innovations' success stories in the municipality. Following the issuance of Government Regulation Number

38 Year 2017 concerning Regional Innovation, it is explicitly mentioned that regional innovation is coordinated by the heads of Research and Development (R & D) Agency. Applying qualitative approach through literature study, this reasearch examines the role of the agency in performing its tasks based on the government regulation. This study aims to contribute ideas about any possible effort that can be done by R & D Agency in Samarinda Municipality in carrying out its function as mentioned in Government Regulation Number 38 Year 2017 concerning Regional Innovation. Result of the research indicates that the agency must strengthen itself as organization in charge of regional innovation by providing criteria for regional innovation, becoming Independent Team Coordinator for local innovation innitiatives derived from local government leader, local parliament member, civil servant, and local government apparatus. The Agency must have ability to think and work fast. The agency must also improve its human resources, both in quantity and quality aspects. Finally, the agency must obtain additional budget to support its coordinating job to improve the Regional Innovation System (SIDa).

Keywords: *organization strengthening, research and development Agency, innovation.*

INDEKS NASKAH TAHUN 2017 BERDASARKAN ABJAD

1. Analisis Besaran Tambahan Penghasilan Bagi Aparatur Pemerintah Daerah Dengan Metode Indeks Insentif; Rustan A, Fani Heru Wismono, Kemal Hidayah dan Wildan Lutfi A; Vol 13 No 2, Tahun 2017
2. Analisis Rentang Harga Gula Kristal Rafinasi Pada Pasar Lelang Komoditas Dengan Pendekatan Harga Paritas; Bagus Wicaksana; Vol 13 No 2, Tahun 2017
3. Evaluasi Dampak Pelaksanaan Program Pembinaan Dan Pengembangan Industri Kecil Dan Menengah Di Kabupaten Ponorogo; Dina Trisiana Iskandar, Sumartono dan Tjahjanulin Domai; Vol 13 No 1, Tahun 2017
4. Kualitas Pelayanan Izin Mendirikan Bangunan (Imb) Pada Badan Pelayanan Perizinan Terpadu Dan Penanaman Modal (Bpptpm) Kabupaten Cianjur Provinsi Jawa Barat; Nanang Suparman; Vol 13 No 1, Tahun 2017
5. Membangun Model Pelayanan Publik Desa : Mendekatkan Pelayanan Di Tingkat Lokal; Marsono; Vol 13 No 1, Tahun 2017
6. Mengukur Kemampuan Keuangan Daerah Pemerintah Kota Semarang Dalam Pelaksanaan Otonomi Daerah Tahun 2013-2017; Budi Prayitno; Vol 13 No 3, Tahun 2017.
7. Penerapan Sertifikasi Aquaculture Stewardship Council (Asc) Terhadap Produk Udang Budidaya; Radityo Pramoda dan Hertria Maharani Putri; Vol 13 No 2, Tahun 2017
8. Pengaruh Kekayaan Sumber Daya Alam Batubara Terhadap Ketimpangan Pendapatan Di Provinsi Kalimantan Timur; Ahmad Zaini; Vol 13 No 2, Tahun 2017
9. Pengaruh Kepemimpinan, Budaya Organisasi, Dan Lingkungan Kerja Serta Kepuasan Kerja Terhadap Kinerja Pegawai Wilayah Kecamatan Kota Tarakan; Ana Sriekaningsih; Vol 13 No 1, Tahun 2017; Vol 13 No 1, Tahun 2017
10. Pengembangan Kompetensi Aparatur Sipil Negara Di Lingkungan Pemerintah Provinsi Kalimantan Timur; Dewi Sartika dan Mayahayati Kusumaningrum; Vol 13 No 2, Tahun 2017
11. *Public Sosial Private Partneship* (PSPP) Dalam Penyediaan Infrastruktur Publik; Tomi Setiawan dan Nosia Warsa; Vol 13 No 3, Tahun 2017
12. Sebuah Pelajaran Dari Pelaksanaan Reformasi Pajak Di Indonesia Dan Vietnam; Abdul Rahman; Vol 13 No 1, Tahun 2017; Vol 13 No 1, Tahun 2017
13. Studi Mengenai Transformasi Ekonomi Berbasis Pariwisata Di Provinsi Kalimantan Selatan; Fitri Handayani; Vol 13 No 3, Tahun 2017.
14. Tingkat Kesesuaian Kompetensi Inti Dan Manajerial Pejabat Pengawas (Eselon IV) Di Kantor Wilayah Kementerian Agama Provinsi Kalimantan Timur; Lia Rosliana dan Rustan A; Vol 13 No 3, Tahun 2017.
15. Upaya Penguatan Badan Penelitian Dan Pengembangan Kota Samarinda Pasca Penerapan Peraturan Pemerintah Nomor 38 Tahun 2017 Tentang Inovasi Daerah; Tri Wahyuni dan Tri Noor Aziza; Vol 13 No 3, Tahun 2017.

UCAPAN TERIMAKASIH

Jurnal Borneo Administrator mengucapkan terima kasih dan penghargaan setinggi-tingginya kepada Mitra Bestari (Reviewers) yang telah melakukan review terhadap naskah-naskah yang masuk ke Jurnal Borneo Administrator selama 2017

Dr. rer.publ Samodra Wibawa, M.Sc.

(Universitas Gadjah Mada – Yogyakarta)

Ely Susanto, SIP, MBA, PhD

(Universitas Gadjah Mada – Yogyakarta)

Dr. Bevaola Kusumasari

(Universitas Gadjah Mada – Yogyakarta)

Wawan Sobari, S.IP, MA, PhD

(Universitas Brawijaya – Malang)

Prof. Dr. Hj. Nur Fitriyah, MS.

(Universitas Mulawarman – Samarinda)

Istiqomah, SE., M.Sc., Ph.D

(Universitas Jenderal Soedirman – Purwokerto)



PETUNJUK PENULISAN AUTHOR GUIDELINES

Naskah merupakan hasil penelitian, kajian, maupun pemikiran kritis terhadap isu-isu di bidang administrasi publik/negara, misalnya kebijakan publik atau manajemen publik, yang orisinal dan belum pernah diterbitkan di jurnal atau majalah lain. Naskah diketik dalam Bahasa Indonesia atau Bahasa Inggris (untuk Judul, Abstrak dan Kata Kunci diketik dalam Bahasa Inggris dan Bahasa Indonesia), menggunakan kertas ukuran A4 sepanjang 15-20 halaman (termasuk gambar, tabel dan daftar pustaka). Menggunakan huruf *Times New Roman* ukuran 12 (kecuali judul, nama dan alamat penulis) dan spasi tunggal. Batas tepi kanan 2,5 cm, batas tepi kiri 3 cm, batas atas 3 cm, dan batas bawah 3 cm. Format naskah sekurang-kurangnya adalah sebagai berikut:

Article should be a result of research, study, or thought upon actual issues in the field of public administration (such as public policy, public management), original, and have not been published in any scientific journal. The article is typed in Indonesian or English (the title, abstract, keywords should be typed in two languages), uses Times New Roman font, font size 12, on A4 paper for 15-20 pages (including graphic/picture, table, and references). The paper margin uses 2.5 cm (right), 3 cm (left), 3 cm (top), and 3 cm (bottom). The minimal form is as below:

**JUDUL NASKAH DITULIS DALAM DWIBAHASA
(Bahasa Indonesia dan Bahasa Inggris, huruf Arial 14 pt)**

**THE TITLE IS PRESENTED IN TWO LANGUAGES
(Indonesian and English, Arial font, size 14pt)**

Nama Penulis

Name of writer(s)

(Arial 12, bold)

Afiliasi atau nama lembaga tempat penulis bekerja

Alamat lembaga tempat penulis bekerja

Alamat email penulis

(Arial 12)

Affiliation or organization in which the author(s) work for

Official address of the organization

Author's email

Abstract

Abstract is a brief description of the article, between 100 and 200 words, to help readers quickly reveal purpose and content of the article. It includes aim of the article, method, and conclusion. It is presented in two languages, typed in Times New Roman 11pt, single line spacing, and 1 cm indentation.

Keywords: *first keyword, second keyword, third keyword.*

Abstrak

Abstrak adalah penjelasan singkat artikel, antara 100 dan 200 kata, untuk membantu pembaca mengetahui tujuan dan isi naskah. Isi abstrak mencakup tujuan penulisan naskah, metode, dan kesimpulan. Abstrak ditulis dalam dua bahasa, menggunakan huruf Times New Roman 11pt, spasi tunggal, dan indentasi 1 cm.

Kata kunci: kata kunci pertama, kata kunci kedua, kata kunci ketiga.

A. PENDAHULUAN

INTRODUCTION

Pendahuluan merupakan pembukaan naskah, memuat aspek-aspek atau hal-hal yang membuat tema tulisan tersebut menarik dan mengundang rasa keingintahuan (*curiosity*). Penulis dapat mengemukakan fenomena-fenomena menarik terkait dengan topik tulisan dengan disertai data-data pendukung. Dan pada akhir bagian ini perlu diberikan tujuan penulisan tema atau permasalahan yang akan dijawab. (*Times New Roman 12pt, spasi 1*).

This introduction presents interesting aspects of the article and attracts readers to continue reading the article (*curiosity*). Writer(s) is/are endorse to present relevant and interesting phenomena and supported by data. In the end of this section should be presented main aim or problem that will be discussed and answered in the article.

B. METODE PENELITIAN

RESEARCH METHOD

Apabila naskah tersebut merupakan hasil penelitian maka perlu dituliskan metode penelitian yang digunakan, setidaknya meliputi pendekatan yang digunakan, cara pengumpulan data, dan cara analisis data. (*Times New Roman 12pt, spasi 1*).

If the article is a research result, the article should presents the research method including research approach, data collecting, and analysis.

C. KERANGKA TEORI ATAU KERANGKA KONSEP

THEORETICAL OR CONCEPTUAL FRAMEWORK

Bagian ini memaparkan teori, pendekatan atau konsep yang digunakan sebagai dasar berpikir untuk membahas tema naskah. (*Times New Roman 12pt, spasi 1*).

This section presents theory, approach, or concept that is used to analyze the data.



D. HASIL DAN PEMBAHASAN

RESULT AND DISCUSSION

Bagian ini berisi temuan-temuan, analisis dan pembahasan serta interpretasi terhadap data yang digunakan secara lengkap dan komprehensif serta terkait dengan permasalahan. (*Times New Roman 12pt, spasi 1*).

This section presents comprehensive discussion, analysis, and interpretation of collected data.

Referensi

Referencing

Setiap pendapat, ide, data, atau informasi yang dikutip dari sumber lain baik dalam bentuk kalimat langsung maupun tidak langsung, harus dicantumkan sumbernya dengan menggunakan *running note*, dan ditulis dalam Daftar Pustaka. Catatan kaki (*footnote*) bisa digunakan untuk memberikan penjelasan atau informasi tambahan terhadap bagian isi naskah.

Writer(s) must present information sources when cite any opinion, idea, data, or information from other sources in running note style and all sources must be presented in the reference/bibliography section. APA referencing style is applied in this journal. In addition, applying footnote is available to provide any additional information.

Tabel dan Gambar

Table and Picture/Graphic

Setiap tabel dan gambar diberi judul. Posisi judul tabel berada di atas tabel, sedangkan posisi judul gambar berada di bawah gambar. Jika tabel dan gambar merupakan hasil kutipan atau modifikasi dari sumber lain maka wajib mencantumkan sumbernya. Contoh penampilan tabel dan gambar adalah sebagai berikut:

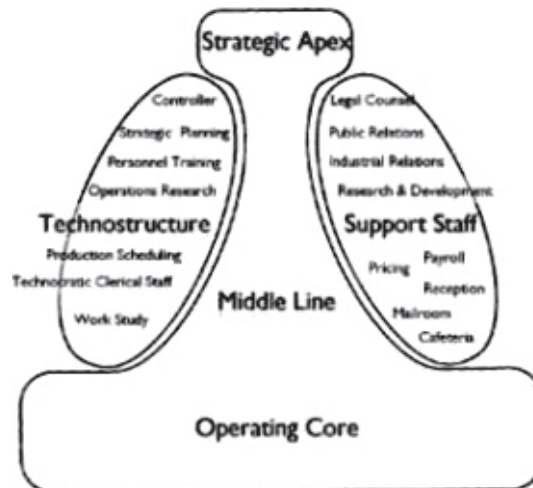
All tables and pictures/graphics should have titles. The title position of table is on the top of the table. If the table or picture/graphic is adopted or modified from any source, the writer(s) must cite the source. Examples of table and picture are below:

Tabel 1.

Jumlah Penduduk Menurut Kabupaten/Kota di Kalimantan Timur tahun 2012-2014

No.	Kabupaten/Kota	2012	2013	2014
1	Paser	244.111	249.991	256.175
2	Kutai Barat	143.101	144.018	144.892
3	Kutai Kartanegara	665.489	683.131	700.439
4	Kutai Timur	281.594	294.216	306.974
5	Berau	191.576	197.388	203.223
6	Penajam Paser Utara	148.034	150.205	152.119
7	Mahakam Ulu	25.522	25.678	25.894
8	Balikpapan	583.272	594.322	605.096
9	Samarinda	764.908	781.015	797.006
10	Bontang	152.089	155.880	159.614
Jumlah Total		3.199.696	3.275.844	3.351.432

Sumber: BPS Kaltim (2015:79)



Sumber: Mintzberg (1993)

Gambar 1.

Pembagian Kelompok pada Struktur Organisasi

E. PENUTUP

CONCLUSION

Penutup berisi Kesimpulan dan Saran atau Rekomendasi berkaitan dengan tujuan tulisan atau permasalahan yang dikemukakan pada bagian Pendahuluan. Apabila dianggap perlu bisa ditambahkan implikasi kebijakan atas saran atau rekomendasi yang diberikan. (*Times New Roman* 12pt, spasi 1).

This section at least consists of conclusion and recommendation. In this section, author should present the answer of problem that has been mentioned in the Introduction section. Policy implication of the recommendation is available to present in this section.

F. UCAPAN TERIMA KASIH (*Optional*)

ACKNOWLEDGMENT (*Optional*)

Bagian ini bisa digunakan untuk memberikan pengakuan mengenai status naskah dan apresiasi kepada sponsor penelitian maupun pihak yang telah turut membantu penulis dalam melakukan penelitian maupun pembuatan naskah. (*Times New Roman* 12pt, spasi 1).

This section is used to present an acknowledgement of article status and gratitude for any person(s) or organization that have contribution to support the author in conducting the research or completing the article.

DAFTAR PUSTAKA

REFERENCES

Daftar Pustaka ditulis menggunakan model APA, disusun berurutan berdasar abjad. Untuk sumber yang diperoleh dari internet harus disertakan tanggal sumber tersebut diakses/diunduh. (*Times New Roman* 12pt, spasi 1). Beberapa contoh penulisan daftar pustaka adalah sebagai berikut:

The references are presented in APA style and they are organized in alphabetically order. Any source that is gained from website/internet should put the date when the information is accessed or retrieved. Several examples of references are below:



Dwiyanto, Agus. (2015). *Reformasi Birokrasi Kontekstual*. Yogyakarta: Gadjah Mada University Press.

PKP2A III LAN. (2010). Efektivitas Perencanaan Pembangunan Daerah di Kalimantan. *Jurnal Borneo Administrator*. 6 (1). hal. 1876-1898.

Utomo, Tri Widodo W. (2009). *Balancing Decentralization and Deconcentration: Emerging Need for Asymmetric Decentralization in the Unitary States*. Makalah Diskusi No. 174. Nagoya: Graduate School of International Development (GSID), Nagoya University. Online: <http://www.gsid.nagoya-u.ac.jp/bpub/research/public/paper/article/174.pdf> diakses tanggal 25 November 2010.

Pengiriman Naskah

Article Submitting

Naskah disubmit online melalui samarinda.lan.go.id/jba dan dikirim melalui email ke jba@lan.go.id dan borneo.jurnal@gmail.com. serta dilengkapi dengan Persyaratan Keaslian Naskah dan Daftar Riwayat Hidup penulis. Setiap naskah yang masuk ke Redaksi akan dievaluasi oleh Tim Penyunting, kemudian direview oleh Mitra Bebestari (*Reviewers*) yang memiliki kepakaran di bidang yang sesuai dengan tema naskah. Penyunting berhak mengubah susunan kalimat, panjang tulisan dan aspek penulisan lainnya agar sesuai dengan gaya selingkung Jurnal Borneo Administrator. Atas setiap naskah yang dimuat akan diberikan imbalan kepada penulis.

Article should be sent to: jba@lan.go.id along with Original Form and Curriculum Vitae (CV). All received articles will be assessed by Editor Team, and the selected articles will be reviewed by independent reviewers based on their expertise. Editor Team has authority to adjust some words or sentences (if any) and length of article so it will meet JBA's style. To all published articles, we will provide with reward to the authors.

Pengiriman Naskah

Article Submitting

Naskah dikirim melalui email ke: jba@lan.go.id dilengkapi dengan Pernyataan Keaslian Naskah dan CV penulis. Setiap naskah yang masuk ke Redaksi akan dievaluasi oleh Tim Penyunting, kemudian direview oleh Mitra Bebestari (*Reviewers*) yang memiliki kepakaran di bidang yang sesuai dengan tema naskah. Penyunting berhak mengubah susunan kalimat, panjang tulisan dan aspek penulisan lainnya agar sesuai dengan gaya selingkung Jurnal Borneo Administrator. Atas setiap naskah yang dimuat akan diberikan imbalan kepada penulis.

Article should be sent to: jba@lan.go.id along with Original Form and Curriculum Vitae (CV). All received articles will be assessed by Editor Team, and the selected articles will be reviewed by independent reviewers based on their expertise. Editor Team has authority to adjust some words or sentences (if any) and length of article so it will meet JBA's style. To all published articles, we will provide with reward to the authors.